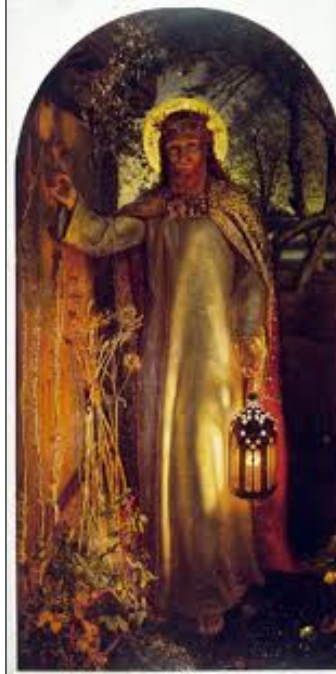


# Year 4 Block 2 RE Knowledge Organiser - Is Christmas a festival of light or love?

## Vocabulary

1. Bible	The Christian sacred text.
2. Old Testament	The first part of the Bible, written before Jesus.
3. New Testament	The second part of the Bible, written after Jesus.
4. Prophecy	A prediction of future events.
5. Advent	The time leading up to Christmas, when people prepare for Jesus' coming.
6. Incarnate	Having the form of a body (the embodiment).
7. Holy Trinity	One God in three forms; the Father, the Son and the Holy Spirit.
8. Imagery	Images created in the mind.
9. Orthodox	Those who strictly follow the rules or laws set out by their religion.
10. Crucifix	A Christian cross.
11. Symbolism	Expressing things through symbols.
12. Incense	A substance that has a pleasant smell when burnt.

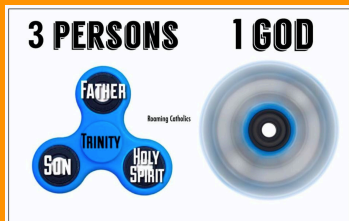
## The Light of the World By Holman Hunt



## The Mystical Nativity By Botticelli



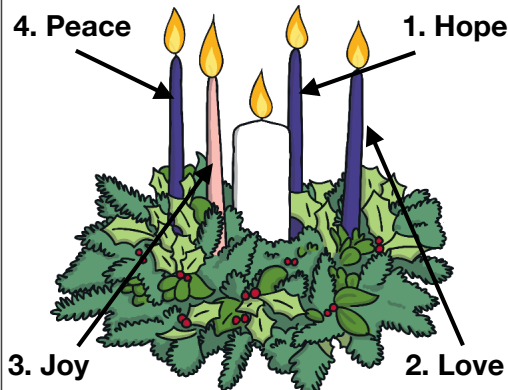
## Did you know that Christians believe God is the Holy Trinity?



1. God is the Father.
2. Jesus, the Son of God, is God in human form (incarnate) and was sent to earth by God as a gift for humankind.
3. The Holy Spirit is God's presence and Christians believe the Spirit is inside them too.

## The Advent Wreath

*Advent, Advent, the little light burns,  
first one then two then three then four,  
and then the Christ Child at the door.*



## Candles

Four candles are put around the wreath and often a fifth candle is put in the middle. A candle is lit each Sunday before Christmas Day. If there is a fifth candle, it is lit on Christmas Day. In some churches, there are three purple candles, one pink candle and a white candle. In other churches, the candles in an Advent wreath are red or white.



**Week 1** – a purple candle is lit. This symbolises hope with the 'Prophet's Candle' reminding people that Jesus is coming.

**Week 2** – a purple candle is lit. This symbolises faith with the 'Shepherd's Candle' and remembers Mary and Joseph's journey to Bethlehem.

**Week 3** – a pink candle is lit. This is known as the Candle of Joy or the 'Shepherd's Candle' and represents the joy the world experience at the coming birth of Jesus.

**Week 4** – a purple candle is lit. This symbolises peace and is called the 'Angel's Candle'. It reminds us of the message of the angels, 'Peace on earth, good will toward men'.

**Christmas Day** – the white candle is lit. This is known as the Christ Candle.