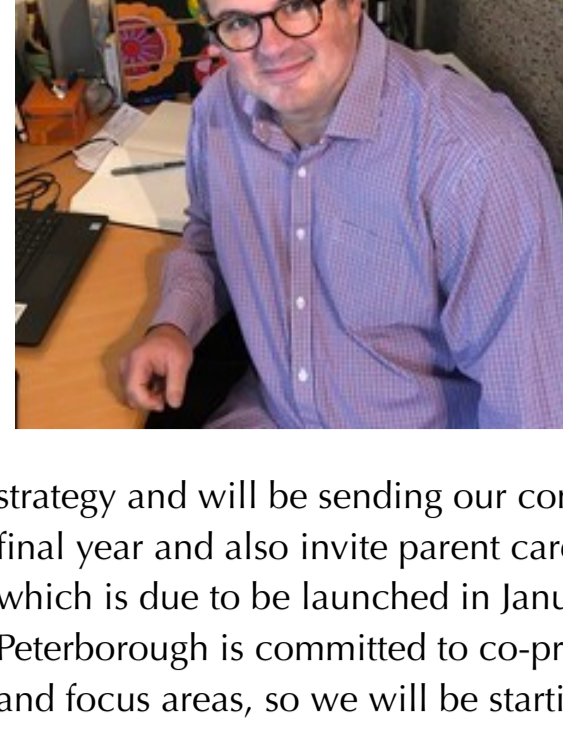


## SEND Update - Spring Term 2023

Cambridgeshire County Council sent this bulletin at 14-03-2023 09:00 AM GMT



March 2023



At this time of year, as the weather improves and the days become lighter, we are given the opportunity to reflect on the positives and within this newsletter there is definitely a lot of positives to focus on. The refresh of our SEND Information Hub Local Offer is a particularly exciting element of this newsletter, representing many hours of consultation and joint working to ensure that the information about all aspects of SEND is available for everyone and I think the new approach is engaging and pleasing, the launch will be in April, so there is time for you to impact on the final version, please do!

We have also completed the final Phase of our SEND strategy and will be sending our communications to share with you our focus areas for the final year and also invite parent carers to be a part of the co-production for our new strategy, which is due to be launched in January 2024. This seems like a long time away, but as a team, Peterborough is committed to co-production and it will take time to gather feelings, wishes and focus areas, so we will be starting this very soon.

Finally, I will be leaving my role as AD for SEND & Inclusion at Easter, in order to take on a new role as Director of SEND for a National Academy Trust. I have really enjoyed working in Peterborough and Cambridgeshire. The teams I have worked alongside have been amongst some of the most committed and dedicated I have had the good fortune to work with. I would like to thank the whole SEND team for their hard work over the last 3-4 years, I will miss them all and thank you, parent carers, for your support too. I know that the team are capable and will be able to build on the foundations, so I can move on reassured that the progress made will continue.

All the best – and don't forget to take some time to notice the better weather.

## Are you worried about the rising cost of energy bills, food and transport?

You are not alone; the cost of living crisis is affecting many of us. You may want help accessing grants and debt advice, support getting all the money you're entitled to, or simply want to know more about the government's recent support measures.

Whatever your money worries may be, Peterborough City Council have put together some helpful information and Cambridgeshire. The teams I have worked alongside have been amongst some of the most committed and dedicated I have had the good fortune to work with. I would like to thank the whole SEND team for their hard work over the last 3-4 years, I will miss them all and thank you, parent carers, for your support too. I know that the team are capable and will be able to build on the foundations, so I can move on reassured that the progress made will continue.

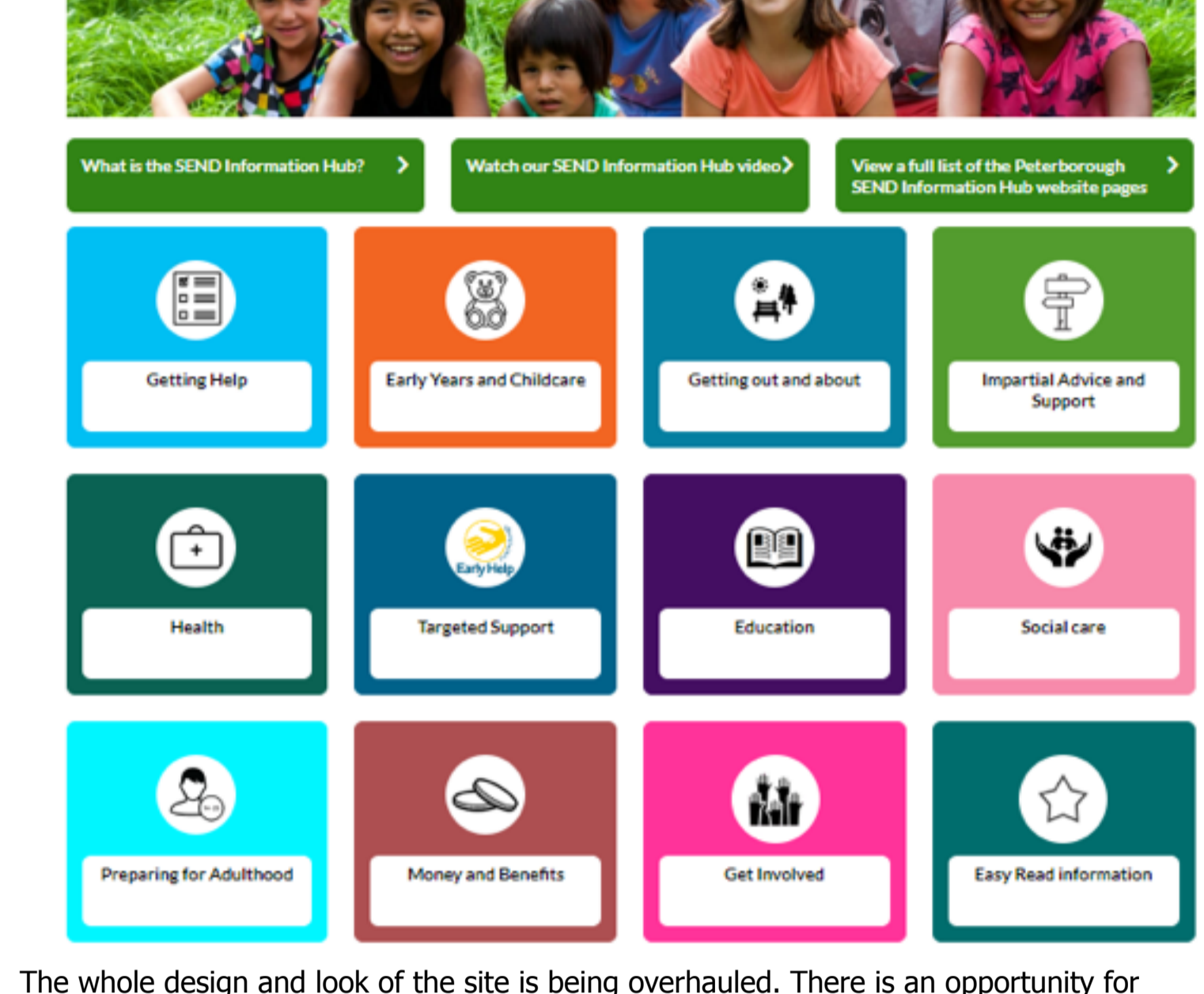
You may also find the information on our Support, Advice and Information for Parent Carers and Carers on the Peterborough Information Network page useful.

## New Look SEND Information Hub

The SEND Information Hub (which used to be called the Local Offer) is having a refresh. You can look at the existing site at [www.peterborough.gov.uk/localoffer](http://www.peterborough.gov.uk/localoffer)

The SEND Information Hub is a rich source of information for parent carers and children and young people with SEND. It has information on a wide range of useful topics.

The new design is colourful and bright with lots of images. The Home Page will look like this:



The whole design and look of the site is being overhauled. There is an opportunity for parent carers to help in making the site look it's best. If you are interested in reviewing content and design, please email [localoffer@peterborough.gov.uk](mailto:localoffer@peterborough.gov.uk). We would be delighted to hear from you.

The new site will be going live in March or April 2023.

## SCOPE

Equality for disabled people

Every second Thursday of the month 5 – 7pm at Peterborough Museum - **Scope Youth Community Collective Get Together.**

All young people aged 18 – 25 are welcome to come along to meet new people. The group brings together disabled and non-disabled young adults to create change in their communities. We support any project ideas and have funding available to put those ideas into action.

We also have our monthly **Scope Community Get Together** for disabled adults and family/carers aged 25+. The date is not yet confirmed for these, so please get in touch to register your interest.

Contact details can be found below and you can also visit the website for further information.

**Sophie Pearson** - Youth and Community Engagement Officer

**Email:** [sophie.pearson@scope.org.uk](mailto:sophie.pearson@scope.org.uk)

**Telephone:** 0777 6650 890

## New Peterborough Parent Carer Hub run by Caring Together



Caring Together are starting a new parent carer hub.

The hub is open to all parent carers caring for a child or young person with complex needs.

This is a face-to-face group offering peer support plus we will be hosting regular workshops/professionals coming along to present and offer advice to parent carers.

Caring together offers transition to adult services support for parent carers and this will be available during the hub.

It's on the last Tuesday of every month from 10am to 12pm in the Tesco Extra Community Room, Hampton, Peterborough.

More details can be found on the [Caring Together website](#).

Or you can call 03452410954.

You can book online via [Eventbrite](#).

## Disability Social Care 0 – 25 Service and Adult Social Care for young people over 18 Updated Information

Please visit our updated 0-25 Disability Social Care and Adult Social Care for young people aged 18 plus pages on Peterborough Information Network website.

## Peterborough Community Children's Occupational Therapy

An Occupational Therapist will be available for 10-minute slots to:

- Answer queries around making a referral to the Occupational Therapy service (all referrals still need to come via a health or education professional, but this advice line is also open to parents to request support from our service).
- To provide basic (nonspecific, as an assessment has not been carried out) practical advice and to signpost to universal strategies not already considered by parents/carers to support a child's functional and independence skills.
- To signpost to target strategies within our 'Go to OT Guide' aimed at school staff and education settings within the Local Authority.

Contact our therapy admin team on 0300 555 5969 to request a booking form.

Please visit our [Peterborough Children's Therapies NHS Facebook Page](#), or our website for further information:

- Occupational Therapy - Children
- Physiotherapy - Children
- Speech and Language Therapy - Children

## Peterborough SEN and Inclusion Services brochure 2023

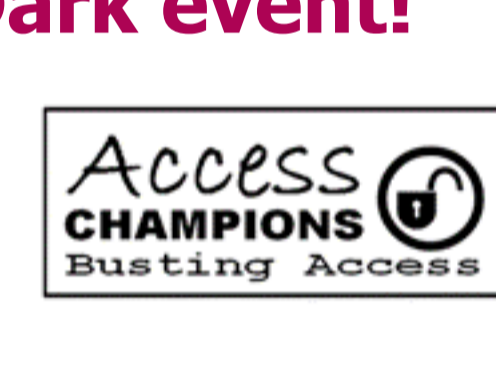
The Peterborough SEN and Inclusion Services brochure for this Academic year is now available. This is a guide to our services with information and FAQs on each service as well as structure charts for the whole service, which have been updated for this academic year.

If you have a query regarding the service, you will most likely find it on this brochure ranging from contact details to service information. You can also find a copy of this on the [Cambs Learn Together website](#).

Please note – the first page is a structure chart for each service and the following pages go into detail about roles & responsibilities and what the service does.

## The Access Champions present their next Coffee Shop After Dark event!

Calling all 14 - 17-year-olds  
**Coffee Shop After Dark (CSAD) returns**  
31 March - 3.30 to 8.30pm  
City College Peterborough



John Mansfield Campus  
Western Avenue  
Dogsthorpe, PE1 4HX  
Easter Disco

Tickets are £2.50 each.

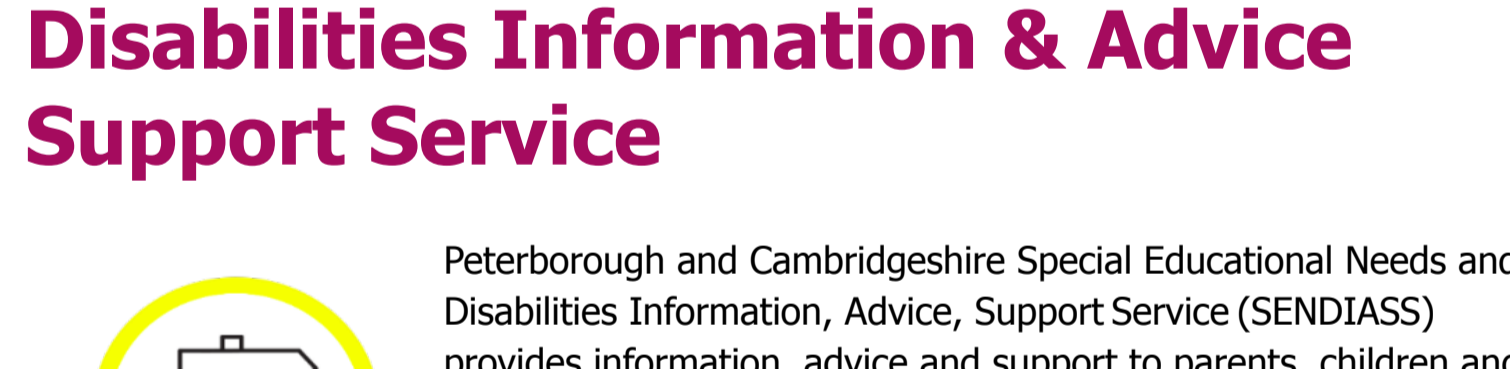
CSAD is run by Access Champions, a group of young adults with learning disabilities whose aim is to increase opportunities across Peterborough for people with learning disabilities.

Parents are welcome to leave their children as all staff and Access Champions are fully trained and DBS checked.

We will have a tuck shop selling food and drinks so please bring small change if you wish to purchase anything.

To reserve your ticket, please message Access Champions or Coffee Shop After Dark or email [AChampion@citycollegepeterborough.ac.uk](mailto:AChampion@citycollegepeterborough.ac.uk).

## Special Educational Needs and Disabilities Information & Advice Support Service



Peterborough and Cambridgeshire Special Educational Needs and Disabilities Information, Advice, Support Service (SENDIASS) provides information, advice and support to parents, children and young people regarding Special Educational Needs and Disabilities (SEND).

SENDIASS can offer:

- Impartial advice and information about Special Educational Needs and Disabilities.
- Advice and support for parents, children and young people navigating the Special Educational Needs processes.
- Advice and support for parents and young people to work collaboratively with schools, education, health and children's services, and other professionals.
- Inform and signpost parents and young people to other available support services and organisations.
- Advice and support for parents and young people in resolving disagreements – support through mediations and tribunals.

Contact: 01733 863979  
Email: [SENDIASS@peterborough.gov.uk](mailto:SENDIASS@peterborough.gov.uk)

## Vivacity SEND Activities and Inclusive Leisure

**SEND out of school hours sessions**  
Vivacity runs term-time sessions and holiday clubs for children and young people aged 7-19 with special educational needs or disabilities (SEND), providing opportunities to spend time with their peers.

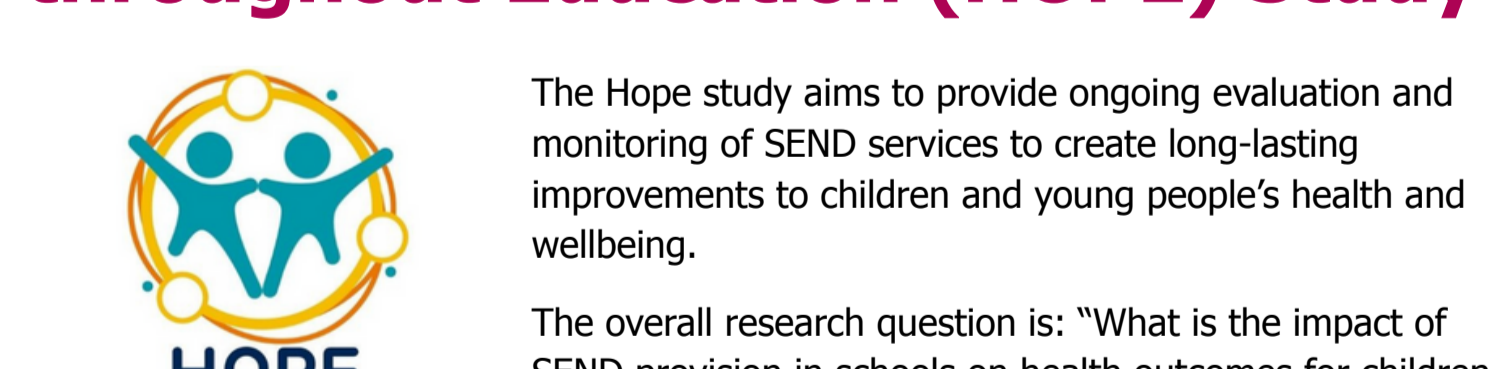


We feel it is important for children and young adults to come together to be social, engage in activities and support each other. We understand that a lot of children and young adults with SEND can often feel isolated in other mainstream environments, but at Vivacity sessions they can develop social skills, make their own choices on activities they'd like to do and make friends.

**Inclusive Sports**  
Our programme engages and works with young people and adults with disabilities to increase their participation in sport.

Vivacity's exercise services for children and young adults with disabilities focuses on more than just delivering great sporting opportunities, we aim to develop both physical, mental and social skills in all of our sessions. Participants can expect solid support from our experienced friendly staff who help to ensure they benefit from fun, friendships and fitness. Our inclusive disability sports programme aims to build confidence, strength and long term life skills.

## Health Outcomes for young People throughout Education (HOPE) Study



The Hope study aims to provide ongoing evaluation and monitoring of SEND services to create long-lasting improvements to children and young people's health and wellbeing.

The overall research question is: "What is the impact of SEND provision in schools on health outcomes for children and young people?"

These findings will enable policy makers, service providers, and service users decide who could most benefit from SEND provision.

The first findings from this study have now been published and are summarised in the flyers below. Each flyer summarises the findings for each of the three participant groups:

- Children and young people with SEND
- Parents and Carers
- SEND professionals

## Family Voice Peterborough

Family Voice Peterborough are a local registered charity who are actively seeking to improve services in all areas of the lives of children and young people with disabilities or additional needs. We are here for Parents and Carers of children and young people aged 0–25 years with a disability or additional needs.



They aim to work together with professionals and parents so that the services for children and young people meet their needs. Putting parent carers and their children at the centre and helping them to be heard.

Please see below events for parent/carers - All the events and booking link as well as can be accessed on the [Family Voice Peterborough website](#) events page as well as the social media pages or you can get in contact on [office@familyvoice.org](mailto:office@familyvoice.org).

Twitter  
Facebook

**Sessions coming up:**

**SHCF face to face session**  
6 April - 4.30pm to 6pm at Goldhay Centre

**Parent/Carer coffee and signposting**  
19 April - 12.30pm to 2pm at Argo Lounge

**Parent/Carer Listening meeting virtual**  
20 April - 10am to 11.30am on Microsoft Teams

**Parent/Carer coffee and signposting**  
17 May - 12.30pm to 2pm at Argo Lounge

**Activity World Private session**  
26 May - 6.15pm to 8.15pm at Activity World

**SHCF face to face session**  
1 June - 4.30pm to 6pm at Goldhay Centre

**Parent/Carer coffee and signposting**  
21 June - 12.30pm to 2pm at Argo Lounge

**SENDIASS parent/carers HUB sessions**  
29 June - 11am to 2pm at Goldhay Centre

Subscribe to updates from Cambridgeshire County Council

Email Address

e.g. name@example.com

Share Bulletin

POWERED BY

[Privacy Policy](#) | [Cookie Statement](#) | [Help](#)